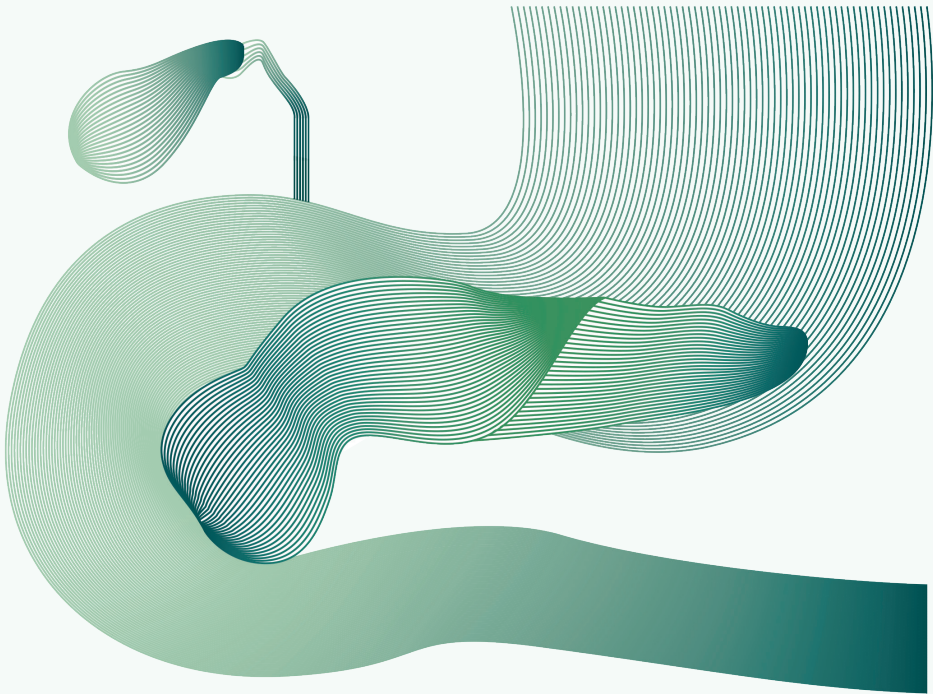


Cancer

**Pancreatic
Cancer**

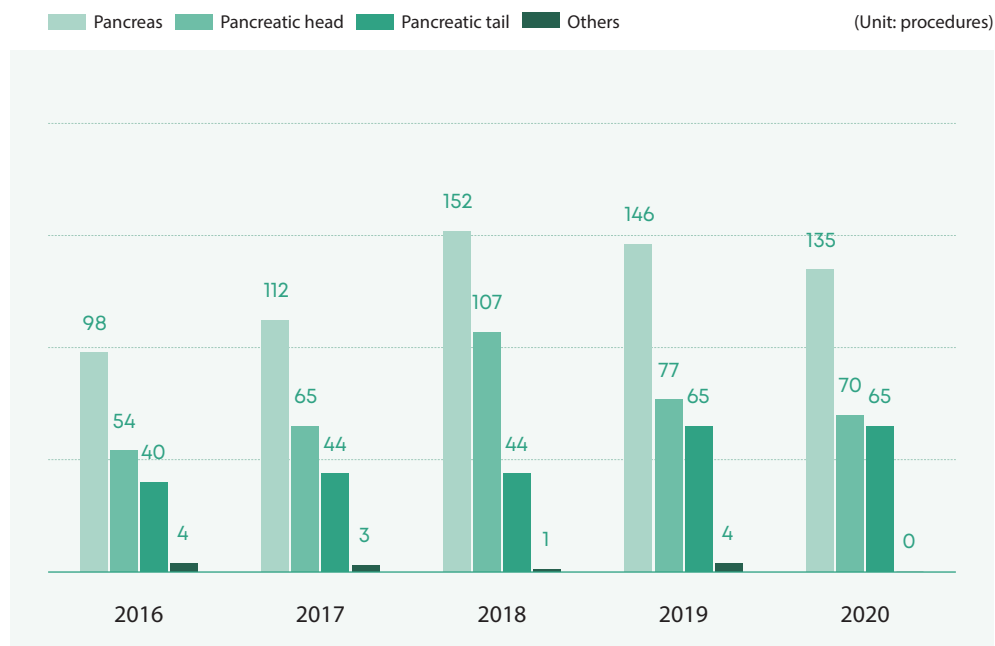


1

Annual number of pancreatic cancer surgery

Index definition Annual number of pancreatic cancer surgeries

Description Based on the number of pancreatic cancer surgeries in the recent 5 years (2016-2020), 135 pancreatic cancer surgeries were performed in 2020. The overall pancreatic cancer surgeries decreased than the previous year. The number of pancreatic head cancer has decreased while that of pancreatic tail cancer has increased.



Calculation

Numerator Number of pancreatic ductal adenocarcinoma surgeries registered in the Surgery registry for the year

Exclusion

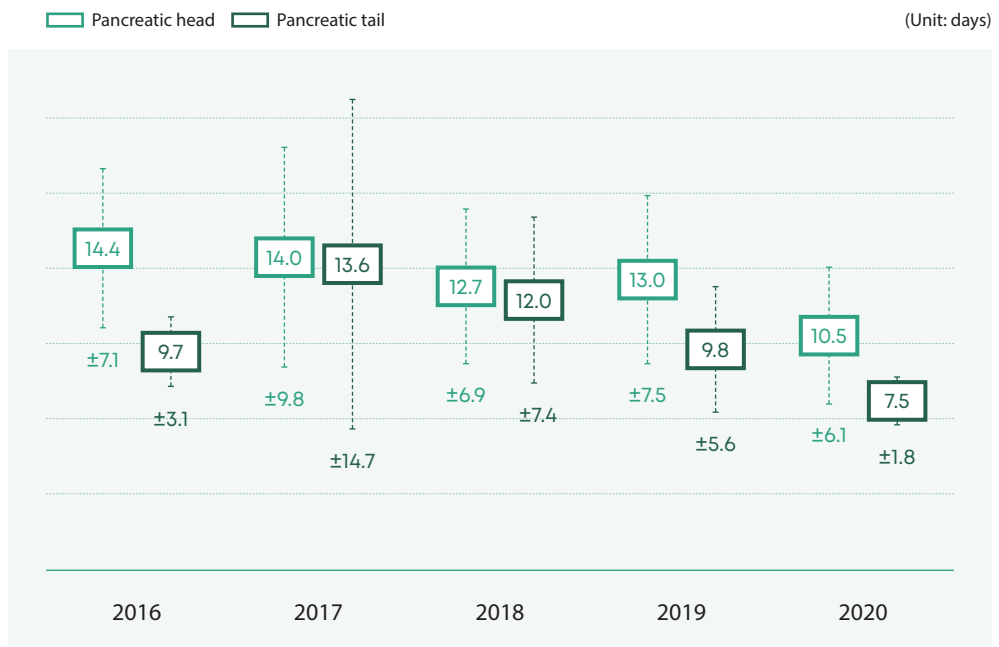
- Numerator**
- ❶ Surgeries that could not perform radical pancreatectomy due to discovery of metastasis during surgery
 - ❷ Other pancreatic cancers including borderline tumor, neuroendocrine tumor, and pseudopapillary tumor

2

Postoperative hospitalization days of pancreatic cancer (mean and SD)

Index definition Average hospitalization day after pancreaticoduodenectomy and distal pancreatectomy of pancreatic cancer patient

Description Based on the calculation of the average postoperative hospitalization days that affect the recovery speed of patients for each surgery type, pancreaticoduodenectomy had longer hospitalization than distal pancreatectomy as it has a relatively wider surgical scope and is more difficult. In the recent 5 years (2016-2020), the average hospitalization is steadily decreasing by year, and the hospitalization days have largely decreased particularly in 2019 and 2020.



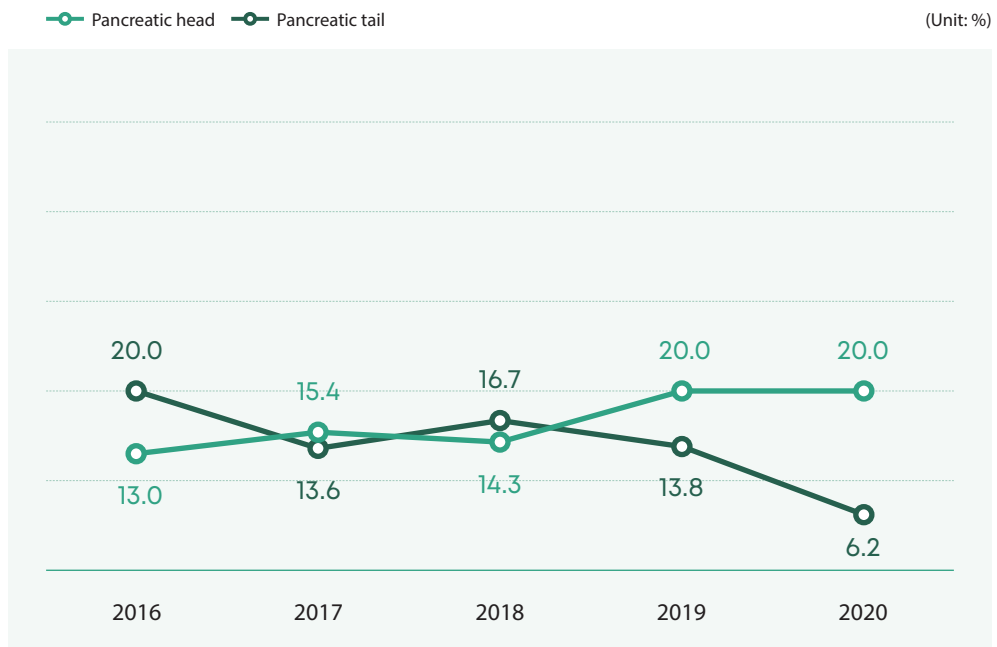
- Calculation**
 - Numerator** Postoperative hospitalization days of pancreatic cancer (Discharge date to operation date / Reference operation date to the next operation date if there are more than two operations during the same hospitalization period)
 - Denominator** Number of pancreatic ductal adenocarcinoma surgeries registered in the Surgery registry
- Exclusion**
 - Denominator** Surgeries that could not perform radical pancreatectomy due to discovery of metastasis during surgery

3

Crude incidence rate of postoperative 30-days in-hospital complications of pancreatic head or tail cancer

Index definition Crude incidence rate of postoperative in-hospital complications within 30 days after pancreatic cancer surgery by type (pancreaticoduodenectomy and distal pancreatectomy)

Description Based on the incidence rate of complications within 30 days after pancreatic cancer surgery by type in the recent 5 years (2016-2020), the incidence of complication after pancreatic cancer surgery has increased for pancreatic head cancer and gradually decreased for pancreatic tail cancer. Surgery after neoadjuvant chemotherapy for inoperable cases has increased, and it appears that such high number of complications was shown due to regular imaging and active interventional procedures.



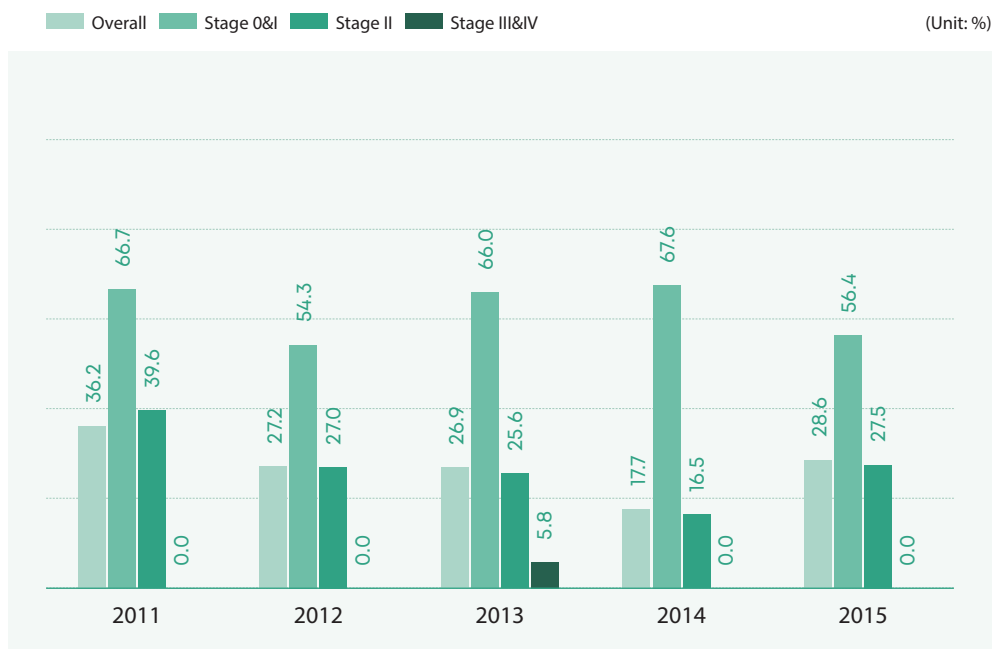
- Calculation**
 - Numerator** Incidence of complications that are Grade IIIa or higher in the Clavien-Dindo classification during hospitalization within 30 days from the procedure
 - Denominator** Number of pancreatic ductal adenocarcinoma surgeries registered in the Surgery registry
- Exclusion**
 - Numerator** Incidence of complications that were not treated at SNUH
 - Denominator** Surgeries that could not perform radical pancreatectomy due to discovery of metastasis during surgery

4

Postoperative 5-years standardized survival rate of pancreatic cancer by stage

Index definition Survival rate of patients for over 5 years after surgery for pancreatic cancer by stage (standardized by age and sex based on total pancreatic cancer surgeries in 2011)

Description Based on the survival rate in 5 years (2011-2015) after pancreatic cancer by year and stage, the survival rate of more advanced stages was low in all years, but the survival rate has gradually increased except in 2011.



- Calculation**
- Numerator** Surviving patients excluding patients who passed away within 5 years from the procedure (operation date by stage)
 - Denominator** Number of pancreatic ductal adenocarcinoma patients registered in the Surgery registry
- Exclusion**
- Denominator**
 - Surgeries that could not perform radical pancreatectomy due to discovery of metastasis during surgery
 - Other pancreatic cancers including borderline tumor, neuroendocrine tumor, and pseudopapillary tumor
 - Foreign nationals